



SAP Concur 

SAP Concur Solution/SAP Connection | EXTERNAL

Is your Travel & Expense Solution **Disconnected?**

Find Out with a Few Quick Questions





Does your travel & expense solution connect to your existing systems?

- Does expense data flow from your travel & expense solution to your ERP or accounting solution?
- Does every change in your accounting or ERP system get automatically updated in your travel & expense solution?
- Does employee information in your HR system automatically update in your travel & expense solution?



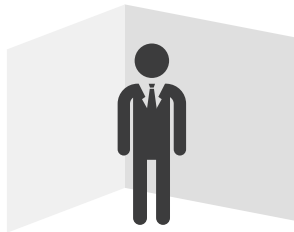
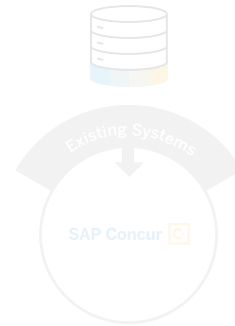


Does your travel & expense solution connect to your existing systems?

If your business systems are not connected, you're leaving gaps in your data and risking mistakes.

77% of CFOs report instantaneous access to a unified, comprehensive, and fully up-to-date set of financial and performance data is critical to their businesses' success over the next five years.

Thriving in the Digital Economy, CFO Research, 2015



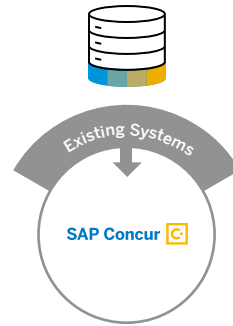
No

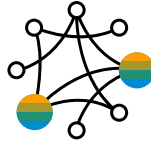
Yes



Does your travel & expense solution connect to your existing systems?

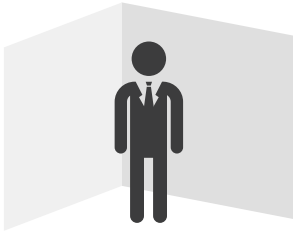
When you connect to your existing systems, you get an accurate way to track all your spending.

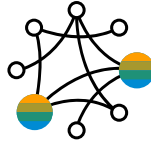




Does your travel & expense solution connect to supplier data?

- Do you get electronic receipts directly from key suppliers?
- Can you capture bookings made outside of your booking tool or TMC?
- Can you integrate and share data with your TMC or the multiple TMCs you may use?



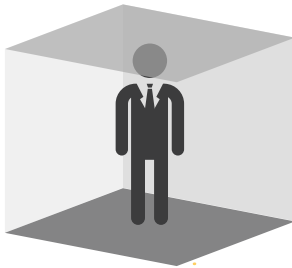


Does your travel & expense solution connect to supplier data?

If you're not connecting to supplier data, how do you really know what you're spending?

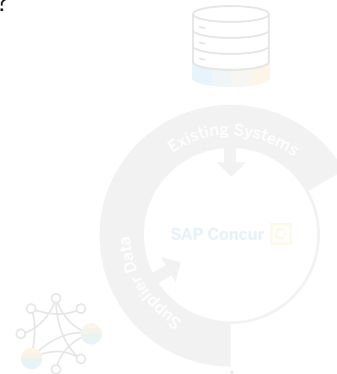
40% of travellers who use an online booking tool also booked directly with a supplier at least once in the last year.

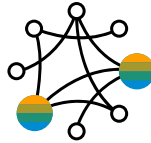
GBTA Foundation, TMCs Today and Tomorrow:
A Survey of Business Travellers and Corporate
Travel Managers, 2015



No

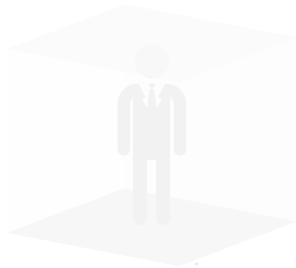
Yes





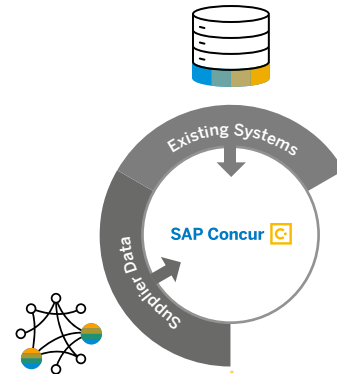
Does your travel & expense solution connect to supplier data?

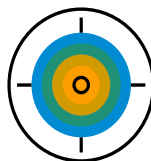
When you connect to supplier data, you can manage travel & expense spending whenever and wherever it occurs.



No

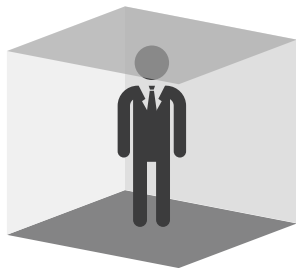
Yes

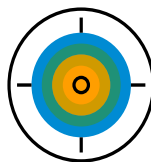




Does your travel & expense solution connect to innovative, third-party applications?

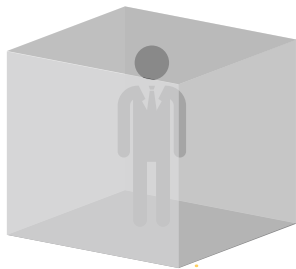
- Can you connect to apps that tackle issues like roaming charges?
- Do you have access to apps that help you manage and reclaim VAT?
- Can you connect to apps that manage industry regulatory requirements?



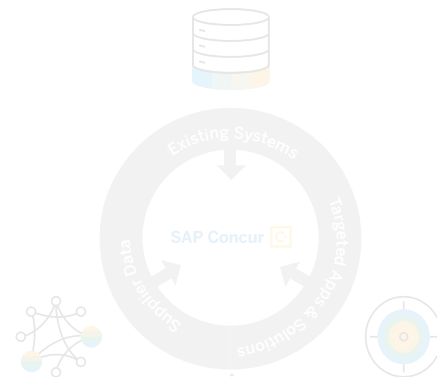


Does your travel & expense solution connect to innovative, third-party applications?

If you're not connecting to targeted apps and solutions you may be exposing your business to unnecessary regulatory and tax risks and leaving travel & expense savings on the table.

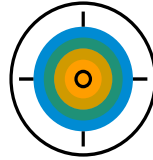


We audited expense claims from businesses not using SAP Concur and found that, on average, 25% of claims contained VAT that could have been reclaimed.



No

Yes



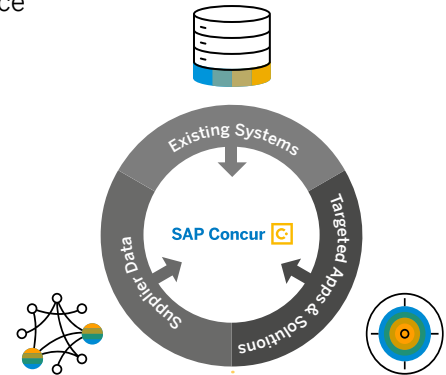
Does your travel & expense solution connect to innovative, third-party applications?

When you connect to targeted apps and solutions, you can improve regulatory compliance and spot new sources of savings.



No

Yes

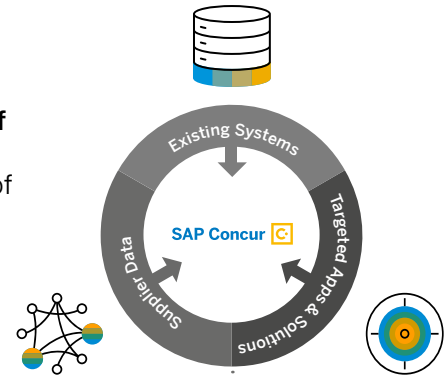
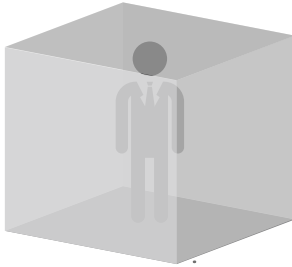




SAP Concur: All your travel and expense data in one place.

With just a booking tool linked to expense claims, there's a barrier between you and the data integration you need to control the travel experience.

SAP Concur connects to every element of your unique travel program, so you can control costs, contain risk and future-proof your business for whatever comes next.



EBOOK TRAVEL INFOGRAPHIC enUS (17/11)

© 2018 SAP SE or an SAP affiliate company. All rights reserved.

No part of this publication may be reproduced or transmitted in any form or for any purpose without the express permission of SAP SE or an SAP affiliate company.

The information contained herein may be changed without prior notice. Some software products marketed by SAP SE and its distributors contain proprietary software components of other software vendors. National product specifications may vary.

These materials are provided by SAP SE or an SAP affiliate company for informational purposes only, without representation or warranty of any kind, and SAP or its affiliated companies shall not be liable for errors or omissions with respect to the materials. The only warranties for SAP or SAP affiliate company products and services are those that are set forth in the express warranty statements accompanying such products and services, if any. Nothing herein should be construed as constituting an additional warranty.

In particular, SAP SE or its affiliated companies have no obligation to pursue any course of business outlined in this document or any related presentation, or to develop or release any functionality mentioned therein. This document, or any related presentation, and SAP SE's or its affiliated companies' strategy and possible future developments, products, and/or platform directions and functionality are all subject to change and may be changed by SAP SE or its affiliated companies at any time for any reason without notice. The information in this document is not a commitment, promise, or legal obligation to deliver any material, code, or functionality. All forward-looking statements are subject to various risks and uncertainties that could cause actual results to differ materially from expectations. Readers are cautioned not to place undue reliance on these forward-looking statements, and they should not be relied upon in making purchasing decisions.

SAP and other SAP products and services mentioned herein as well as their respective logos are trademarks or registered trademarks of SAP SE (or an SAP affiliate company) in Germany and other countries. All other product and service names mentioned are the trademarks of their respective companies.

See <http://www.sap.com/corporate-en/legal/copyright/index.epx> for additional trademark information and notices.